

Walt Disney Presents It's A Small World (18 Favorite Folk Songs)

1289 | *Disneyland Boys Choir*

1965 | 12" Standard LP | *Disneyland (Yellow Rainbow)* | United States | 33 1/3 RPM | Stereo



Walt Disney Presents It's A Small World (18 Favorite Folk Songs)

1289/STER-1289 | *Disneyland Boys Choir*

1965 | 12" Standard LP | *Disneyland (Yellow Rainbow)* | United States | 33 1/3 RPM | Stereo



[View More Info](#)

Walt Disney Presents A Christmas Adventure In Disneyland

1355 | *Gloria Wood -- narrator and characters; Camarata -- conductor*

1973 | 12" Standard LP | *Disneyland (Yellow Plain)* | United States | 33 1/3 RPM | Mono



[View More Info](#)

Walt Disney's Trick Or Treat

1358 | *Ginny Tyler -- narrator, Thurl Ravenscroft -- narrator, Ronny Howard, Pete Renoudet and Elenor Audley*

1974 | 12" Standard LP | *Disneyland* | United States | 33 1/3 RPM | Stereo



[View More Info](#)

Walt Disney Productions' America Sings

1366 | *Burl Ives and Disney Cast*

1974 | 12" Standard LP | *Disneyland* | United States | 33 1/3 RPM | Mono

Disneyland

194/FF194 | *The Sandpipers, Mitchell Miller and Orchestra*

| 7" Standard Single | *Little Golden Records* | United States | 45 RPM | Mono

The Official Album Of Disneyland / Walt Disney World

2510 | *Disney Cast*

1980 | 12" Standard LP | *Disneyland (Yellow Rainbow)* | United States | 33 1/3 RPM | Stereo

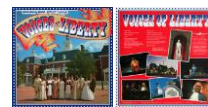


[View More Info](#)

Voices Of Liberty

2524 | *The Voices Of Liberty*

1984 | 12" Standard LP | *Disneyland (Yellow Rainbow)* | United States | 33 1/3 RPM | Mono



[View More Info](#)

The Official Album Of Disneyland / Walt Disney World

2531 | *Disney Cast*

1988 | 12" Standard LP | *Disneyland* | United States | 33 1/3 RPM | Mono



[View More Info](#)

Walt Disney's It's A Small World

323 | *Robie Lester -- narrator*

1968 | 7" Gatefold Story Teller EP | *Disneyland (Light Green)* | United States | 33 1/3 RPM | Mono



Walt Disney's It's A Small World

323 | *Robie Lester -- narrator*

1968 | 7" Gatefold Story Teller EP | *Disneyland (Yellow Rainbow)* | United States | 33 1/3 RPM | Mono



Que Pequeno es el Mundo

323M | *Disney Cast*

1978 | 7" Gatefold Story Teller EP | *Disneyland | United States | 33 1/3 RPM | Mono*

Walt Disney's Pirates Of The Caribbean

336 | *Robie Lester -- narrator and Thurl Ravenscroft*

1970 | 7" Gatefold Story Teller EP | *Disneyland | United States | 33 1/3 RPM | Mono*

Walt Disney Presents The Haunted Mansion

339 | *Disney Cast*

1970 | 7" Gatefold Story Teller EP | *Disneyland (Light Green) | United States | 33 1/3 RPM | Mono*



[View More Info](#)

Walt Disney Presents The Haunted Mansion

339 | *Robie Lester -- narrator*

1970 | 7" Gatefold Story Teller EP | *Disneyland (Yellow Rainbow) | United States | 33 1/3 RPM | Mono*



[View More Info](#)

Walt Disney World The Hall Of Presidents

3806 | *Lawrence Dobkin -- narrator and Royal Dano -- Abraham Lincoln*

1972 | 12" Gatefold Story Teller LP | *Disneyland (Yellow Rainbow) | United States | 33 1/3 RPM | Stereo*

Walt Disney Productions' America Sings

3812 | *Burl Ives and Disney Cast*

1974 | 12" Gatefold Story Teller LP | *Disneyland (Purple) | United States | 33 1/3 RPM | Mono*



Walt Disney Productions' America Sings

3812 | *Burl Ives and Disney Cast*

1974 | 12" Gatefold Story Teller LP | *Disneyland (Red) | United States | 33 1/3 RPM | Mono*



Walt Disney Productions' America Sings

3812 | *Burl Ives and Disney Cast*

1974 | 12" Gatefold Story Teller LP | *Disneyland (Yellow Rainbow) | United States | 33 1/3 RPM | Mono*



[View More Info](#)

Walt Disney Presents It's A Small World

3925 | *Winston Hibler -- narrator*

1964 | 12" Gatefold Story Teller LP | *Disneyland (Black) | United States | 33 1/3 RPM | Mono*

Walt Disney Presents It's A Small World

3925 | *Winston Hibler - narrator*

1964 | 12" Gatefold Story Teller LP | *Disneyland (Purple) | United States | 33 1/3 RPM | Mono*

Walt Disney Presents It's A Small World

3925 | *Winston Hibler -- narrator*

1964 | 12" Gatefold Story Teller LP | *Disneyland (Red) | United States | 33 1/3 RPM | Mono*

Walt Disney Presents It's A Small World

3925 | *Winston Hibler -- narrator*

1964 | 12" Gatefold Story Teller LP | Disneyland (Yellow Rainbow) | United States | 33 1/3 RPM | Mono

Walt Disney's Pirates of the Caribbean

3937 | *Thurl Ravenscroft, The Mellomen and Disney Cast*

1971 | 12" Standard LP | Disneyland (Yellow Rainbow) | United States | 33 1/3 RPM | Mono



[View More Info](#)

Walt Disney's Pirates of the Caribbean

3937 | *Thurl Ravenscroft and Disney Cast*

1971 | 12" Standard LP | Disneyland (Purple) | United States | 33 1/3 RPM | Mono



Walt Disney's Pirates of the Caribbean

3937 | *Thurl Ravenscroft and Disney Cast*

1971 | 12" Standard LP | Disneyland (Red) | United States | 33 1/3 RPM | Mono



The Story And Song From The Haunted Mansion

3947 | *Thurl Ravenscroft -- narrator, Robie Lester, Ronny Howard, Pete Renoudet and Elenor Audley*

1969 | 12" Gatefold Story Teller LP | Disneyland (Black) | United States | 33 1/3 RPM | Stereo

The Story And Song From The Haunted Mansion

3947 | *Thurl Ravenscroft -- narrator, Robie Lester, Ronny Howard, Pete Renoudet and Elenor Audley*

1969 | 12" Gatefold Story Teller LP | Disneyland (Purple) | United States | 33 1/3 RPM | Stereo



[View More Info](#)

The Story And Song From The Haunted Mansion

3947 | *Thurl Ravenscroft -- narrator, Robie Lester, Ronny Howard, Pete Renoudet and Elenor Audley*

1969 | 12" Gatefold Story Teller LP | Disneyland (Red) | United States | 33 1/3 RPM | Stereo



[View More Info](#)

The Story And Song From The Haunted Mansion

3947 | *Robie Lester -- narrator, Ronny Howard, Pete Renoudet, Elenor Audley and Thurl Ravenscroft*

1969 | 12" Gatefold Story Teller LP | Disneyland (Yellow Rainbow) | United States | 33 1/3 RPM | Stereo



[View More Info](#)

Walt Disney's The Enchanted Tiki Room

3966 | *The Enchanted Tiki Room (arranged and conducted by George Bruns,*

1968 | 12" Gatefold Story Teller LP | Disneyland (Purple) | United States | 33 1/3 RPM | Mono



[View More Info](#)

Walt Disney's The Enchanted Tiki Room

3966 | *The Enchanted Tiki Room (arranged and conducted by George Bruns,*

1968 | 12" Gatefold Story Teller LP | Disneyland (Red) | United States | 33 1/3 RPM | Mono



Walt Disney's The Enchanted Tiki Room

3966 | *The Enchanted Tiki Room (arranged and conducted by George Bruns,*

1968 | 12" Gatefold Story Teller LP | Disneyland (Yellow Rainbow) | United States | 33 1/3 RPM | Mono



Walt Disney World's Country Bear Jamboree

3994 | *Disney Cast and George Bruns -- conductor*

1972 | 12" Gatefold Story Teller LP | *Disneyland (Purple)* | United States | 33 1/3 RPM | Mono

Walt Disney World's Country Bear Jamboree

3994 | *Disney Cast and George Bruns -- conductor*

1972 | 12" Gatefold Story Teller LP | *Disneyland (Red)* | United States | 33 1/3 RPM | Mono

Walt Disney World's Country Bear Jamboree

3994 | *Disney Cast and George Bruns -- conductor*

1972 | 12" Gatefold Story Teller LP | *Disneyland (Yellow Rainbow)* | United States | 33 1/3 RPM | Mono

It's A Small World

45-9375 | *Debbie Reynolds*

1972 | 7" Non-Picture Sleeve Single | *Beverly Hills* | United States | 45 RPM | Stereo

It's A Small World

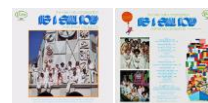
500 | *Disney Cast*

| 7" Non-Picture Sleeve Flexi-Disc | *Disneyland* | United States | 33 1/3 RPM | Mono

It's A Small World / Walt Disney's Greatest Hits

5006 | *The Mike Curb Congregation*

1973 | 12" Standard LP | *Buena Vista Records* | United States | 33 1/3 RPM | Stereo



[View More Info](#)

A Musical History Of Disneyland/Walt Disney Takes You To Disneyland

5008 61283-2/WDL-4004 | *Walt Disney - narrator, The Disneyland Concert Orchestra and Disney Cast*

2005 | 12" Boxed Gold Vinyl LP | *Disneyland* | United States | 33 1/3 RPM | Mono



Walt Disney World (SHOW'N TELL)

51243 | *Disney Cast*

1980 | 7" Gatefold EP | *CBS* | United States | 33 1/3 RPM | Mono

Disney's Main Street Electrical Parade

5-WD | *Disney Cast*

1977 | 7" Clear Sleeve Picture Disc Single | *Walt Disney Productions* | United States | 33 1/3 RPM | Stereo



[View More Info](#)

It's A Small World

619 | *Disney Chorus and Orchestra*

1975 | 7" Standard Single | *Disneyland (Pink/Purple Spectrum)* | United States | 45 RPM | Mono



[View More Info](#)

It's A Small World

619 | *Disney Cast*

1975 | 7" Standard Single | *Disneyland (Pink/Purple Spectrum)* | United States | 45 RPM | Mono



[View More Info](#)

It's A Small World

619 | *Disney Cast*

1975 | 7" Standard Single | *Disneyland (Pink/Purple Spectrum)* | United States | 45 RPM | Mono



[View More Info](#)

Official Album Of Walt Disney World Epcot Center

62519 | *Disney Cast*

1983 | 12" Standard LP | *Buena Vista Records* | United States | 33 1/3 RPM | Stereo

The Official Album Of Disneyland Walt Disney World

62531 | *Disney Cast*

1988 | 12" Standard LP | *Buena Vista Records* | United States | 33 1/3 RPM | Stereo

Walt Disney's It's A Small World

909 | *Disney Cast*

1972 | 7" Standard EP | *Disneyland* | United States | 33 1/3 RPM | Mono



The Orange Bird

922 | *Anita Bryant, Mike Sammes, The Birdsville Choir and The Mike Sammes Singers*

1972 | 7" Standard EP | *Disneyland (Light Blue)* | United States | 33 1/3 RPM | Mono



[View More Info](#)

The Kids Of The Kingdom

BV-4045 | *Kids Of The Kingdom*

1968 | 12" Standard LP | *Buena Vista Records* | United States | 33 1/3 RPM | Mono



Silent Night (Stille Nachts)

BVS 710 | *Disneyland Boys Choir*

1965 | 7" Standard Single | *Buena Vista Records* | Italy | 45 RPM | Mono



Walt Disney's Little Man Of Disneyland

CD-334 | *Gilbert Mack -- narrator*

1955 | 7" Book and Record EP | *Bestway Products (Gold/White)* | United States | 45 RPM | Mono

Walt Disney's Little Man Of Disneyland

CD-334 | *Gilbert Mack -- narrator*

1955 | 7" Book and Record EP | *Bestway Products (Gold)* | United States | 78 RPM | Mono

New Year's Eve With Bernie Bernard And His Orchestra

CRS 2001 | *Bernie Bernard and his Orchestra*

| 12" Standard LP | *Crestbook Records* | United States | 33 1/3 RPM | Stereo

Tokyo Disneyland

CX-7168DR | *Disney Cast*

| 12" Gatefold LP | *Disneyland (Yellow Rainbow)* | Japan | 33 1/3 RPM | Stereo



The Official Album Of Disneyland/Walt Disney World

CZ-5011-DR | Disney Cast

1980 | 12" Standard LP | Disneyland (Yellow Rainbow) | Japan | 33 1/3 RPM | Mono

Walt Disney Presents It's A Small World

CZ-5020-DZ | Disney Cast

| 12" Standard LP | Disneyland (Yellow Rainbow) | Japan | 33 1/3 RPM | Mono



The Haunted Mansion

D000433702 | Thurl Ravenscroft -- narrator, Robie Lester, Ronny Howard, Pete Renoudet and Elenor Audley

2009 | 12" Boxed LP | Disneyland | United States | 33 1/3 RPM | Stereo

Haunted Mansion

D002506001 | Disney Cast

2017 | 12" Clear Sleeve LP | Walt Disney Records | United States | 33 1/3 RPM | Stereo

It's A Small World

D002506101 | Disney Cast

2017 | 12" Clear Sleeve EP | Walt Disney Records | United States | 33 1/3 RPM | Stereo

Pirates Of The Caribbean

D002506201 | Disney Cast

2017 | 12" Clear Sleeve LP | Walt Disney Records | United States | 33 1/3 RPM | Stereo

Disneyland

D194 | The Sandpipers, Mitchell Miller and Orchestra

| 6" Standard Yellow Vinyl Single | Little Golden Records | United States | 78 RPM | Mono

Walt Disney's Song Of Fantasyland

D300 | Disney Cast

| 6" Standard Yellow Vinyl Single | Little Golden Records | United States | 78 RPM | Mono



Walt Disney's Song Of Frontierland

D301 | Disney Cast with Full Chorus and Orchestra

| 6" Standard Yellow Vinyl Single | Little Golden Records | United States | 78 RPM | Mono



[View More Info](#)

Walt Disney's Song Of Tomorrowland

D302 | Disney Cast with Full Chorus and Orchestra

| 6" Standard Yellow Vinyl Single | Little Golden Records | United States | 78 RPM | Mono



[View More Info](#)

Walt Disney's Song Of Adventureland

D303 | Disney Cast

| 6" Standard Yellow Vinyl Single | Little Golden Records | United States | 78 RPM | Mono





It's A Small World

D-78 | *Inspired*

1978 | 12" Die-Cut Single | Jefferson Blvd. | United States | 45 RPM | Stereo

Christmas Trees Of Disneyland

DBR-91 | *Camarata and Chorus*

1958 | 10" Standard EP | Mickey Mouse Club | United States | 78 RPM | Mono

Christmas Trees Of Disneyland

DBR-91 | *Camarata Orchestra and Chorus and Witches 3 and Friends*

1958 | 7" Standard EP | Mickey Mouse Club (Black) | United States | 45 RPM | Mono



[View More Info](#)

Walt Disney's It's A Small World

DD.22 | *Jack Coleman Singers, Scatman Crothers, Phil Harris and Disney Cast*

1971 | 7" Standard Single | Disneyland Doubles | United Kingdom | 45 RPM | Mono



[View More Info](#)

Disneyland's Main Street Electrical Parade

DE-1 | *Disney Cast*

1973 | 7" Clear Sleeve Picture Disc Single | Walt Disney Productions | United States | 33 1/3 RPM | Stereo



[View More Info](#)

Walt Disney's Disneyland Band Concert

DEP-3002A | *Vesey Walker and The Disneyland Band*

1956 | 7" Standard EP | Disneyland (Yellow Stars) | United States | 45 RPM | Mono

Walt Disney Takes You To Main Street U.S.A.

DEP-4004A | *Walt Disney with The Disneyland Concert Orchestra*

1956 | 7" Standard EP | Disneyland | United States | 45 RPM | Mono



Walt Disney Takes You To Main Street U.S.A.

DEP-4004A | *Walt Disney with The Disneyland Concert Orchestra*

1956 | 7" Standard EP | Disneyland | United States | 45 RPM | Mono



Walt Disney Takes You To Adventureland

DEP-4004B | *Walt Disney with The Disneyland Concert Orchestra*

1956 | 7" Standard EP | Disneyland | United States | 45 RPM | Mono

Walt Disney Takes You To Adventureland

DEP-4004B | *Walt Disney with The Disneyland Concert Orchestra*

1956 | 7" Standard EP | Disneyland | United States | 45 RPM | Mono

Walt Disney Takes You To Frontierland

DEP-4004C | *Walt Disney with The Disneyland Concert Orchestra*

1956 | 7" Standard EP | Disneyland | United States | 45 RPM | Mono



[View More Info](#)

Walt Disney Takes You To Frontierland

DEP-4004C | Walt Disney with The Disneyland Concert Orchestra
1956 | 7" Standard EP | Disneyland | United States | 45 RPM | Mono



Walt Disney Takes You To Tomorrowland

DEP-4004D | Walt Disney with The Disneyland Concert Orchestra
1956 | 7" Standard EP | Disneyland | United States | 45 RPM | Mono



Walt Disney Takes You To Tomorrowland

DEP-4004D | Walt Disney with The Disneyland Concert Orchestra
1956 | 7" Standard EP | Disneyland | United States | 45 RPM | Mono



Walt Disney Takes You To Fantasyland

DEP-4004E | Walt Disney with The Disneyland Concert Orchestra
1956 | 7" Standard EP | Disneyland | United States | 45 RPM | Mono

Walt Disney Takes You To Fantasyland

DEP-4004E | Walt Disney with The Disneyland Concert Orchestra
1956 | 7" Standard EP | Disneyland | United States | 45 RPM | Mono

Monsanto Presents Miracles From Molecules

DL-558 | Disney Cast
1968 | 7" Standard Single | Monsanto | United States | 33 1/3 RPM | Mono



[View More Info](#)

The Orange Bird Song

DL-560 | Anita Bryant
1971 | 7" Standard Single | Disneyland (Orange) | United States | 45 RPM | Mono



[View More Info](#)

The Haunted Mansion

DMK-1001/DMK-1002 | Disney Cast
1977 | 12" Boxed LP | Walt Disney Educational Media Company | United States | 33 1/3 RPM | Mono

The Jungle River Cruise

DMK-1003/DMK-1004 | Disney Cast
1977 | 12" Boxed LP | Walt Disney Educational Media Company | United States | 33 1/3 RPM | Mono

The Pirates Of The Caribbean

DMK-1005/DMK-1006 | Disney Cast
1977 | 12" Boxed LP | Walt Disney Educational Media Company | United States | 33 1/3 RPM | Mono



[View More Info](#)

Journey Into Space

DMK-1007/DMK-1008 | Disney Cast
1977 | 12" Boxed LP | Walt Disney Educational Media Company | United States | 33 1/3 RPM | Mono



[View More Info](#)

Walt Disney Presents It's A Small World (18 Favorite Folk Songs)

DQ-1289 | Disneyland Boys Choir

1965 | 12" Standard LP | Disneyland (Yellow Plain) | United States | 33 1/3 RPM | Mono



[View More Info](#)

Walt Disney Presents It's A Small World (18 Favorite Folk Songs)

DQ-1289 | Disneyland Boys Choir

1965 | 12" Standard LP | Disneyland (Yellow Plain) | United States | 33 1/3 RPM | Mono

America the Beautiful

DQ-1346 | Disneyland Concert Band and Glee Club

1972 | 12" Standard LP | Disneyland | United States | 33 1/3 RPM | Mono

A Christmas Adventure In Disneyland

DQ-1355 | Gloria Wood -- narrator, Camarata -- conductor

1973 | 12" Standard LP | Disneyland | United States | 33 1/3 RPM | Mono

Walt Disney's Trick Or Treat

DQ-1358 | Ginny Tyler - narrator, Ronny Howard, Pete Renoudet, Elenor Audley and Thurl Ravenscroft

1974 | 12" Standard LP | Disneyland | United States | 33 1/3 RPM | Mono

Walt Disney Productions' America Sings

DQ-1366 | Burl Ives and Disney Cast

1974 | 12" Standard LP | Disneyland | United States | 33 1/3 RPM | Mono

Fun With Music: A Musical Tour Of Disneyland

EM-1507/EM-1508 | Disney Cast

1977 | 12" Boxed EP | Walt Disney Educational Media Company | United States | 33 1/3 RPM | Mono

Magic Kingdom

F-109 | Disney Cast

1959 | 7" Standard Single | Disneyland | United States | 45 RPM | Mono

Grad Nite At Disneyland

F-398 | The Elliott Brothers Orchestra

1962 | 7" Standard EP | Buena Vista Records | United States | 45 RPM | Mono



It's A Small World

F-449 | Disneyland Boys Choir

1965 | 7" Standard Single | Buena Vista Records | United States | 45 RPM | Mono



Joie De Vivre

F-455 | Maurice Chevalier

1967 | 7" Standard Single | Buena Vista Records (Rainbow) | United States | 45 RPM | Mono



It's A Small World

F-483 | Bobby Hammack Orchestra / Jack Coleman Singers

1971 | 7" Standard Single | Buena Vista Records (White) | United States | 33 1/3 RPM | Stereo



[View More Info](#)

The Age Of Not Believing

F-484 | Bobby Hammack Orchestra

1971 | 7" Non-Picture Sleeve Single | Buena Vista Records | United States | 45 RPM | Mono

The Age Of Not Believing

F-484 | Bobby Hammack Orchestra

1971 | 7" Non-Picture Sleeve Single | Buena Vista Records | United States | 45 RPM | Mono

Walt Disney's It's A Small World

FS-909 | Disney Cast

1972 | 7" Standard EP | Disneyland | United States | 33 1/3 RPM | Mono

Walt Disney Productions' The Orange Bird

FS-922 | Anita Bryant, Mike Sammes, The Birdsville Choir and The Mike Sammes Singers

1972 | 7" Standard EP | Disneyland (Light Blue) | United States | 33 1/3 RPM | Mono



[View More Info](#)

Walt Disney Productions' The Orange Bird

FS-922 | Anita Bryant, Mike Sammes, The Birdsville Choir and The Mike Sammes Singers

1972 | 7" Standard EP | Disneyland (Light Blue) | United States | 33 1/3 RPM | Mono



[View More Info](#)

Sweet Emma At Disneyland

GHB-142 | Sweet Emma

| 12" Standard LP | GHB Records | United Kingdom | 33 1/3 RPM | Mono

The Main Street Electrical Parade (Baroque Hoedown)

JH-11394 | Floyd Cramer

1978 | 7" Non-Picture Sleeve Single | RCA Records | United States | 45 RPM | Both

It's A Small Small World

K 14494 | The Mike Curb Congregation

1973 | 7" Non-Picture Sleeve Single | MGM Records | United States | 45 RPM | Mono

Kids Of The Kingdom Show Album No. 1

KK-1001 | The Kids Of The Kingdom

1976 | 12" Standard LP | Walt Disney Productions | United States | 33 1/3 RPM | Stereo



[View More Info](#)

The Storybook Land Christmas Tree

LG-752 | Camarata Orchestra and Chorus

1962 | 7" Standard Single | Disneyland (Yellow Plain) | United States | 45 RPM | Mono



[View More Info](#)

The Storybook Land Christmas Tree

LG-752 | Camarata -- conductor

1962 | 6" Standard Single | Disneyland | United States | 78 RPM | Mono



Walt Disney's It's A Small World

LG-775 | Disney Cast

1964 | 7" Standard Single | Disneyland | United States | 45 RPM | Mono



[View More Info](#)

Walt Disney's It's A Small World

LG-775 | Disney Cast

1964 | 7" Standard Single | Disneyland | United States | 45 RPM | Mono



Walt Disney's It's A Small World

LG-775 | Disney Cast

1964 | 6" Standard Single | Disneyland | United States | 78 RPM | Mono

Original Souvenir Record From Walt Disney's It's A Small World

LG-775 | Disney Cast

1964 | 7" Envelope Mailer Single | Disneyland | United States | 45 RPM | Mono

Songs From Walt Disney's Enchanted Tiki Room

LG-807 | Disney Cast

1968 | 7" Standard Single | Disneyland | United States | 45 RPM | Mono



[View More Info](#)

The Orange Bird Song

LG-823 | Anita Bryant

1971 | 7" Standard Single | Disneyland (Yellow Plain) | United States | 45 RPM | Mono



[View More Info](#)

Que Pequeno Es El Mundo

LLP 323 M/LLP 323-PA | Disney Cast

1969 | 7" Gatefold Story Teller EP | Disneylandia (Yellow Plain) | United States | 33 1/3 RPM | Mono

Walt Disney's It's A Small World

LLP-323 | Robie Lester -- narrator

1968 | 7" Gatefold Story Teller EP | Disneyland | United States | 33 1/3 RPM | Mono



Walt Disney's Pirates Of The Caribbean

LLP-336 | Robie Lester - narrator and Thurl Ravenscroft

1970 | 7" Gatefold Story Teller EP | Disneyland | United States | 33 1/3 RPM | Mono



Walt Disney Presents The Haunted Mansion

LLP-339 | Disney Cast

1970 | 7" Gatefold Story Teller EP | Disneyland (Green) | United States | 33 1/3 RPM | Mono





Walt Disney Presents The Haunted Mansion

LLP-339 | *Disney Cast*

1970 | 7" Gatefold Story Teller EP | *Disneyland (Light Green)* | United States | 33 1/3 RPM | Mono



Joie De Vivre

PD 9247 | *Maurice Chevalier*

1967 | 7" Standard Single | *Buena Vista Records (Rainbow)* | United States | 45 RPM | Mono



It's A Small World

R-870 | *Myron Floren*

| 7" Non-Picture Sleeve Single | *Ranwood Records* | United States | 45 RPM | Stereo

It's A Small World

R-926 | *The Magic Organ*

1972 | 7" Non-Picture Sleeve Single | *Ranwood Records (Rainbow Tan)* | United States | 45 RPM | Mono

It's A Small World

R-926 | *The Magic Organ*

1972 | 7" Non-Picture Sleeve Single | *Ranwood Records (White)* | United States | 45 RPM | Mono

Walt Disney Presents The Haunted Mansion

RA-42 | *Disney Cast*

| 7" Boxed EP | *Walt Disney Educational Media Company* | United States | 33 1/3 RPM | Mono

A Rocket Trip To The Moon

RD 4004 | *Disney Cast*

1958 | 7" Standard EP | *Disneyland (Purple)* | United States | 45 RPM | Mono



Firehouse Five Plus Two At Disneyland

S10049 | *Danny Alguire, Harper Goff, Ward Kimball, Clarke Mallery, Mounte Mountjoy, Ed Penner and Frank Th*

1958 | 12" Standard LP | *Good Time Jazz (Black)* | United States | 33 1/3 RPM | Stereo

Firehouse Five Plus Two At Disneyland

S10049 | *Danny Alguire, Harper Goff, Ward Kimball, Clarke Mallery, Mounte Mountjoy, Ed Penner and Frank Th*

1958 | 12" Standard LP | *Good Time Jazz (Red)* | United States | 33 1/3 RPM | Stereo

Sweet Emma At Disneyland

SLP 242 | *Sweet Emma*

| 12" Standard LP | *Southland Records* | United States | 33 1/3 RPM | Mono

Walt Disney Productions' America Sings

ST-3812 | *Burl Ives and Disney Cast*

1974 | 12" Gatefold Story Teller LP | *Disneyland* | United States | 33 1/3 RPM | Mono

A Day At Disneyland

ST-3901 | Walt Disney and Cliff Edwards

1957 | 12" Gatefold Story Teller LP | Disneyland | United States | 33 1/3 RPM | Mono



[View More Info](#)

A Day At Disneyland

ST-3901 | Walt Disney and Cliff Edwards

1957 | 12" Gatefold Story Teller 2-Disc LP Set | Disneyland | United States | 45 RPM | Mono



A Day At Disneyland

ST-3901 | Walt Disney and Cliff Edwards

1957 | 12" Gatefold Story Teller LP | Disneyland | United States | 33 1/3 RPM | Mono



A Day At Disneyland

ST-3901 | Walt Disney and Cliff Edwards

2015 | 12" Gatefold Story Teller LP | Disneyland (Purple) | United States | 33 1/3 RPM | Mono

Walt Disney Presents A Christmas Adventure In Disneyland

ST-3912 | Gloria Wood -- narrator and characters

1958 | 12" Gatefold Story Teller LP | Disneyland (Purple) | United States | 33 1/3 RPM | Mono



[View More Info](#)

Walt Disney Presents It's A Small World

ST-3925 | Winston Hibler -- narrator

1964 | 12" Gatefold Story Teller LP | Disneyland (Purple) | United States | 33 1/3 RPM | Mono



Walt Disney Presents It's A Small World

ST-3925 | Winston Hibler -- narrator

1964 | 12" Gatefold Story Teller LP | Disneyland (Purple) | United States | 33 1/3 RPM | Mono

Walt Disney Presents It's A Small World

ST-3925 | Winston Hibler -- narrator

1964 | 12" Gatefold Story Teller LP | Disneyland (Purple) | United States | 33 1/3 RPM | Mono

Walt Disney's Pirates of the Caribbean

ST-3937 | Thurl Ravenscroft and Disney Cast

1971 | 12" Standard LP | Disneyland (Black) | United States | 33 1/3 RPM | Mono

Walt Disney's Pirates of the Caribbean

ST-3937 | Thurl Ravenscroft and Disney Cast

1971 | 12" Gatefold Story Teller LP | Disneyland (Purple) | United States | 33 1/3 RPM | Mono



Walt Disney's Pirates of the Caribbean

ST-3937 | Thurl Ravenscroft and Disney Cast

1968 | 12" Gatefold Story Teller LP | Sunset Sound Recorders | United States | 33 1/3 RPM | Mono



Walt Disney's Pirates of the Caribbean

ST-3937/3937 | Thurl Ravenscroft and Disney Cast

1971 | 12" Gatefold Story Teller LP | Disneyland (Black) | United States | 33 1/3 RPM | Mono



The Story And Song From The Haunted Mansion

ST-3947 | Robie Lester - narrator, Ronny Howard, Pete RenouDET, Elenor Audley and Thurl Ravenscroft

1969 | 12" Gatefold Story Teller LP | Disneyland (Purple) | United States | 33 1/3 RPM | Mono



[View More Info](#)

Walt Disney's The Enchanted Tiki Room

ST-3966 | The Enchanted Tiki Room (arranged and conducted by George Bruns,

1968 | 12" Gatefold Story Teller LP | Disneyland (Purple) | United States | 33 1/3 RPM | Mono



Walt Disney World's Country Bear Jamboree

ST-3994 | Disney Cast and George Bruns -- conductor

1972 | 12" Gatefold Story Teller LP | Disneyland (Purple) | United States | 33 1/3 RPM | Mono



[View More Info](#)

Walt Disney Presents It's A Small World (18 Favorite Folk Songs)

STER-1289 | Disneyland Boys Choir

1965 | 12" Standard LP | Disneyland | United States | 33 1/3 RPM | Stereo

Walt Disney World The Hall Of Presidents

STER-3806 | Lawrence Dobkin -- narrator and Royal Dano -- Abraham Lincoln

1972 | 12" Gatefold Story Teller LP | Disneyland (Purple) | United States | 33 1/3 RPM | Stereo



[View More Info](#)

The Story And Song From The Haunted Mansion

STER-3947 | Robie Lester -- narrator, Ronny Howard, Pete RenouDET, Elenor Audley and Thurl Ravenscroft

1969 | 12" Gatefold Story Teller LP | Disneyland (Purple) | United States | 33 1/3 RPM | Stereo



[View More Info](#)

The Story And Song From The Haunted Mansion

STER-3947 | Thurl Ravenscroft -- narrator, Robie Lester, Ronny Howard, Pete RenouDET and Elenor Audley

1969 | 12" Gatefold Story Teller LP | Disneyland (Purple) | United States | 33 1/3 RPM | Stereo

The Story And Songs Of The Orange Bird

STER-3991 | Anita Bryant, Ron Howard and Mike Sammes Singers

1971 | 12" Gatefold Story Teller LP | Disneyland (Purple) | United States | 33 1/3 RPM | Stereo



[View More Info](#)

The Kids Of The Kingdom

STER-4045 | The Kids Of The Kingdom

1968 | 12" Standard LP | Buena Vista Records | United States | 33 1/3 RPM | Stereo



[View More Info](#)

The Disneyland Band

STER-4046 | The Magic Kingdom Band and The Dapper Dans

1969 | 12" Standard LP | Buena Vista Records | United States | 33 1/3 RPM | Stereo



[View More Info](#)

The Sounds Of America

UN-0061 | Disney Cast

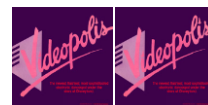
1961 | 10" Standard EP | Disneyland | United States | 33 1/3 RPM |



Videopolis

Unnumbered | Disney Cast

1985 | 7" Standard Single | Disneyland | United States | 33 1/3 RPM | Stereo

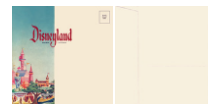


[View More Info](#)

Donald Duck And His Friends

Unnumbered | Disney Cast and Guests

1955 | 6" Envelope Mailer Single | Disneyland (Pink) | United States | 45 RPM | Mono



[View More Info](#)

A Musical Souvenir Of Walt Disney World's Magic Kingdom

W-2/WE-2 | Disney Cast

1973 | 12" Clear Sleeve Picture Disc LP | Disneyland | United States | 33 1/3 RPM | Stereo

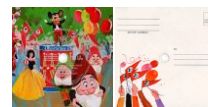


[View More Info](#)

The Walt Disney Character Parade

WD-1 | The Mike Curb Congregation

1974 | 6" Gatefold Mailer Flexi-Disc | EVA-TONE | United States | 33 1/3 RPM | Stereo



[View More Info](#)

Small World (SHOW'N TELL)

WD-121 | Disney Cast

1972 | 7" Gatefold EP | General Electric | United States | 33 1/3 RPM | Mono

Walt Disney World (SHOW'N TELL)

WD-124 | Disney Cast

1972 | 7" Gatefold EP | General Electric | United States | 33 1/3 RPM | Mono

It's A Small World

WD-2 | Jack Coleman Singers and Disney Cast

1975 | 7" Clear Sleeve Picture Disc Single | Walt Disney Productions | United States | 33 1/3 RPM | Stereo



[View More Info](#)

A Musical Souvenir Of America On Parade

WD-3 | Disney Cast

1975 | 12" Clear Sleeve Picture Disc LP | Disneyland | United States | 33 1/3 RPM | Stereo



[View More Info](#)

Disneyland Main Street Electrical Parade

WD-4 | Disney Cast

1977 | 7" Clear Sleeve Picture Disc Single | Disneyland | United States | 33 1/3 RPM | Stereo



[View More Info](#)

Disneyland Main Street Electrical Parade

WD-4 | Disney Cast

1977 | 7" Clear Sleeve Single | Disneyland | United States | 33 1/3 RPM | Stereo

Meet Me Down On Main Street

WDL-1012 | *The Mellomen Barbershop Quartet*
| 12" Standard LP | Disneyland | United States | 33 1/3 RPM | Mono



Walt Disney's Disneyland Band Concert

WDL-3002 | *Disney Cast*
1956 | 12" Standard LP | Disneyland (Yellow Stars) | United States | 33 1/3 RPM | Mono



Walt Disney's Disneyland Band Concert

WDL-3002 | *Disney Cast*
1956 | 12" Standard LP | Disneyland (Purple) | United States | 33 1/3 RPM | Mono



Walt Disney Presents Echoes Of Disneyland

WDL-3005 | *Dee Fisher*
1957 | 12" Standard LP | Disneyland | United States | 33 1/3 RPM | Mono



Date Nite At Disneyland

WDL-3035 | *Elliott Brothers, Tony Paris and Orchestra*
1958 | 12" Standard LP | Disneyland (Purple) | United States | 33 1/3 RPM | Mono



[View More Info](#)

Walt Disney Takes You To Disneyland

WDL-3042 | *Walt Disney - narrator, The Disneyland Concert Orchestra and Disney Cast*
1959 | 12" Gatefold LP | Disneyland | United States | 33 1/3 RPM | Mono

Walt Disney Takes You To Disneyland

WDL-4004 | *Walt Disney - narrator, The Disneyland Concert Orchestra and Disney Cast*
1956 | 12" Gatefold LP | Disneyland | United States | 33 1/3 RPM | Mono



[View More Info](#)

Walt Disney Presenta Que Pequeno Es El Mundo

WDM-20022 | *Disney Cast*
1965 | 12" Standard Red Vinyl LP | Disneylandia | Mexico | 33 1/3 RPM | Mono

New Year's Eve At Disneyland

WD-NY-R | *Roger Caroll -- narrator, Disneyland Mainsteeters, Disneyland Mustangs, Betty Taylor, Firehouse Fiv*
1967 | 12" Standard LP | Pepsi-Cola Company | United States | 33 1/3 RPM | Mono



[View More Info](#)

Walt Disney World's Electrical Water Pageant

WE-1 | *Disney Cast*
1973 | 7" Clear Sleeve Picture Disc | Walt Disney Productions | United States | 45 RPM | Stereo



[View More Info](#)

Walt Disney World Adventureland Steel Band

WE-3 | *Disney Cast*
1976 | 12" Standard LP | Disneyland | United States | 33 1/3 RPM | Stereo



Walt Disney World Main Street Electrical Parade

WE-4 | Disney Cast

1977 | 7" Clear Sleeve Picture Disc Single | | United States | 33 1/3 RPM | Stereo



[View More Info](#)

Walt Disney World Main Street Electrical Parade

WE-4 | Disney Cast

1977 | 7" Clear Sleeve Picture Disc Single | | United States | 33 1/3 RPM | Stereo



[View More Info](#)

Walt Disney Productions' America Sings

WOND-3 | Burl Ives

1974 | 12" Standard LP | Wonderland Music Company, Inc. | United States | 33 1/3 RPM | Stereo



Total Records: 179